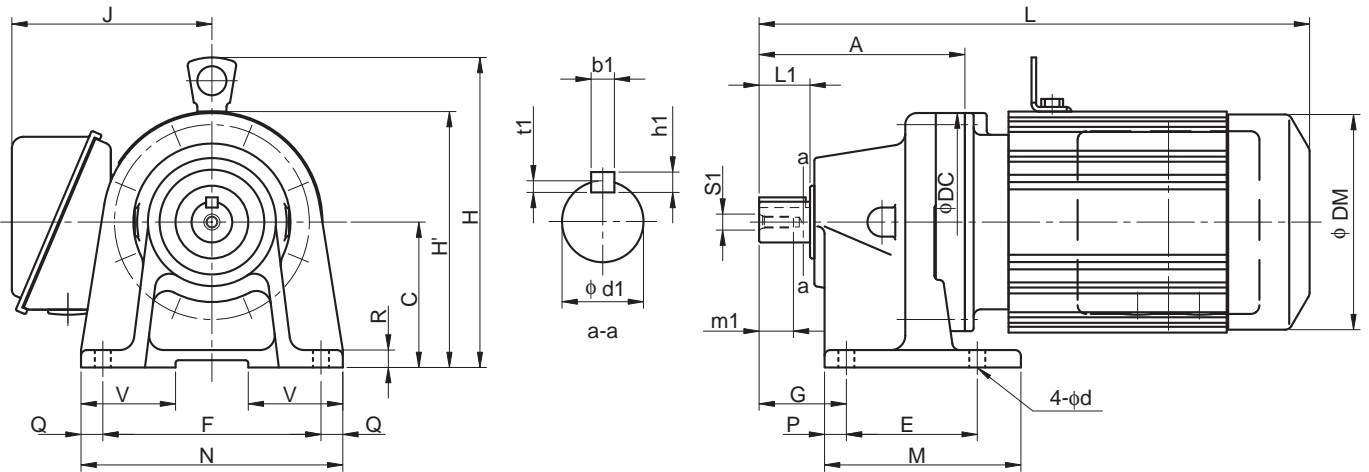


Dimension Tables Gearmotors (Universal Direction, Foot-Mount)

CNHM^{Note 1} - 606□ to 609□

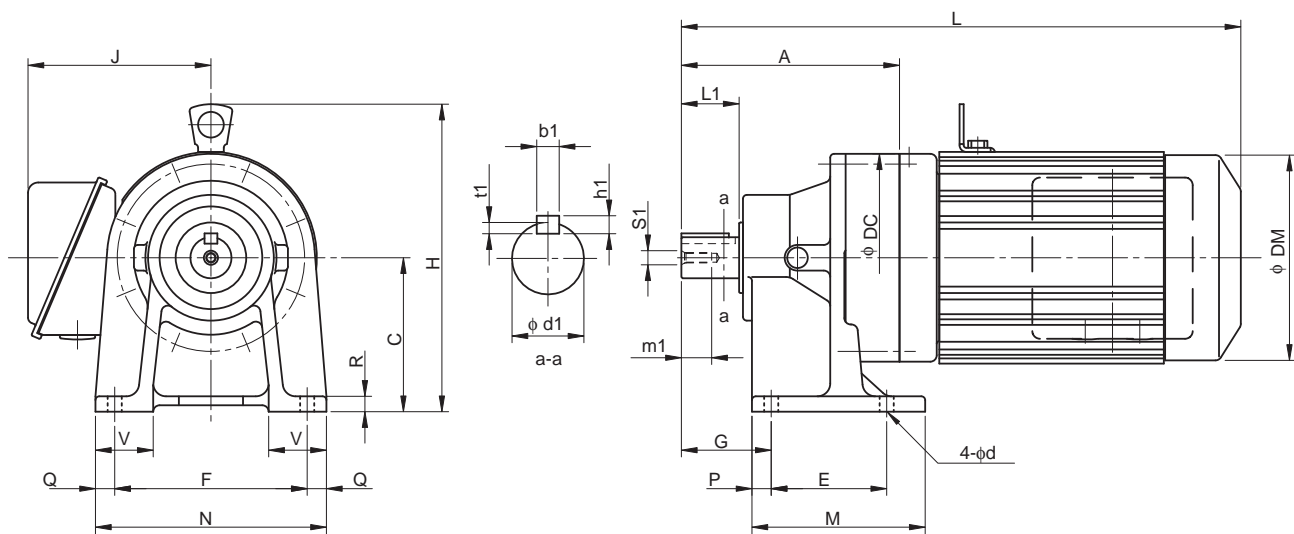


Frame size <small>Note 4</small>	A	C	DC	E	F	G	M	N	P	Q	R	V	d	Output Shaft <small>Note 2, 3, 6</small>						
														d1	L1	b1	h1	t1	S1	m1
606□	92	80	110	60	120	41	84	144	12	12	10	35	9	14	25	5	5	3	M5	16
607□	98	80	110	60	120	47	84	144	12	12	10	35	9	18	30	6	6	3.5	M6	16
608□	129	90	134	75	120	52	99	144	12	12	13	37	9	22	35	6	6	3.5	M6	16
609□	142	100	150	90	150	60	135	180	15	15	12	40	11	28	35	8	7	4	M8	20

Model <small>Note 4, 5</small>	Motor		Standard							With Brake					
	kW	P	L	H	H'	J	DM	W(kg)	L	H	H'	J	DM	W(kg)	
CNHM01 - 606□ - (B) - Ratio	0.1	4	254	-	140	130	119	7	261	-	138	130	124	8	
CNHM02 - 606□ - (B) - Ratio	0.2	4	272	-	138	130	124	8	300	-	138	130	124	9	
CNHM03 - 606□ - (B) - Ratio	0.25	4	272	-	138	130	124	8	300	-	138	130	124	9	
CNHM01 - 607□ - (B) - Ratio	0.1	4	260	-	140	130	119	7	267	-	138	130	124	8	
CNHM02 - 607□ - (B) - Ratio	0.2	4	278	-	138	130	124	8	306	-	138	130	124	9	
CNHM03 - 607□ - (B) - Ratio	0.25	4	278	-	138	130	124	8	306	-	138	130	124	9	
CNHM05 - 607□ - (B) - Ratio	0.4	4	294	-	138	130	124	9	326	-	138	130	124	10	
CNHM01 - 608□ - (B) - Ratio	0.1	4	286	-	157	130	119	10	293	-	157	130	124	11	
CNHM02 - 608□ - (B) - Ratio	0.2	4	304	-	157	130	124	11	332	-	157	130	124	12	
CNHM03 - 608□ - (B) - Ratio	0.25	4	304	-	157	130	124	11	332	-	157	130	124	12	
CNHM05 - 608□ - (B) - Ratio	0.4	4	320	-	157	130	124	13	352	-	157	130	124	14	
CNHM08 - 608□ - (B) - Ratio	0.55	4	361	203	-	140	148	17	404	203	-	140	148	18	
CNHM1 - 608□ - (B) - Ratio	0.75	4	361	203	-	140	148	17	404	203	-	140	148	18	
CNHM01 - 609□ - (B) - Ratio	0.1	4	304	-	175	130	119	12	311	-	175	130	124	14	
CNHM02 - 609□ - (B) - Ratio	0.2	4	322	-	175	130	124	13	350	-	175	130	124	15	
CNHM03 - 609□ - (B) - Ratio	0.25	4	322	-	175	130	124	13	350	-	175	130	124	15	
CNHM05 - 609□ - (B) - Ratio	0.4	4	338	-	175	130	124	14	370	-	175	130	124	16	
CNHM08 - 609□ - (B) - Ratio	0.55	4	379	213	-	140	148	18	422	213	-	140	148	21	
CNHM1 - 609□ - (B) - Ratio	0.75	4	379	213	-	140	148	18	422	213	-	140	148	21	
CNHM1H - 609□ - (B) - Ratio	1.1	4	412	220	-	145	160	21	474	220	-	145	160	26	
CNHM2 - 609□ - (B) - Ratio	1.5	4	412	220	-	145	160	21	474	220	-	145	160	26	

Note: 1. □ indicates motor capacity.
 2. Dimension of shaft end diameter: Dimension tolerance conforms to JIS B 0401-1976 "h6."
 3. Dimension of shaft end key: Dimension tolerance conforms to JIS B 1301-1996 "Parallel Key."

Dimension Tables Gearmotors (Universal Direction, Foot-Mount)

CNHM^{Note 1} - 610□ to 612□

GEARMOTORS

Dimension Tables
CNHM

Frame size <small>Note 4</small>	A	C	DC	E	F	G	M	N	P	Q	R	V	d	Output Shaft <small>Note 2, 3, 6</small>						
														d1	L1	b1	h1	t1	S1	m1
610□	156	100	150	90	150	60	135	180	15	15	12	40	11	28	35	8	7	4	M8	20
611□	170	120	162	90	150	70	135	180	15	15	12	45	11	32	45	10	8	5	M8	20
612□	186	120	204	115	190	82	155	230	20	20	15	55	14	38	55	10	8	5	M8	20

Model <small>Note 4, 5</small>	Motor		Standard						With Brake				
	kW	P	L	H	J	DM	W(kg)	L	H	J	DM	W(kg)	
CNHM02 - 610□ - (B) - Ratio	0.2	4	336	207	130	124	18	364	207	130	124	20	
CNHM03 - 610□ - (B) - Ratio	0.25	4	336	207	130	124	18	364	207	130	124	20	
CNHM05 - 610□ - (B) - Ratio	0.4	4	352	207	130	124	19	384	207	130	124	21	
CNHM08 - 610□ - (B) - Ratio	0.55	4	393	213	140	148	23	436	213	140	148	26	
CNHM1 - 610□ - (B) - Ratio	0.75	4	393	213	140	148	23	436	213	140	148	26	
CNHM1H - 610□ - (B) - Ratio	1.1	4	426	220	145	160	27	488	220	145	160	32	
CNHM2 - 610□ - (B) - Ratio	1.5	4	426	220	145	160	27	488	220	145	160	32	
CNHM3 - 610□ - (B) - Ratio	2.2	4	446	226	152	173	31	509	226	152	173	37	
CNHM05 - 611□ - (B) - Ratio	0.4	4	363	236	130	124	20	394	236	130	124	21	
CNHM08 - 611□ - (B) - Ratio	0.55	4	403	236	140	148	23	452	236	140	148	26	
CNHM1 - 611□ - (B) - Ratio	0.75	4	403	236	140	148	23	452	236	140	148	26	
CNHM1H - 611□ - (B) - Ratio	1.1	4	436	240	145	160	26	493	240	145	160	31	
CNHM2 - 611□ - (B) - Ratio	1.5	4	436	240	145	160	26	493	240	145	160	31	
CNHM3 - 611□ - (B) - Ratio	2.2	4	456	246	152	173	30	519	246	152	173	36	
CNHM4 - 611□ - (B) - Ratio	3.0	4	491	266	168	212	40	563	266	168	212	50	
CNHM5 - 611□ - (B) - Ratio	3.7	4	491	266	168	212	40	563	266	168	212	50	
CNHM05 - 612□ - (B) - Ratio	0.4	4	387	257	130	124	30	419	257	130	124	32	
CNHM08 - 612□ - (B) - Ratio	0.55	4	423	233	140	148	32	466	233	140	148	35	
CNHM1 - 612□ - (B) - Ratio	0.75	4	423	233	140	148	32	466	233	140	148	35	
CNHM1H - 612□ - (B) - Ratio	1.1	4	456	240	145	160	36	518	240	145	160	41	
CNHM2 - 612□ - (B) - Ratio	1.5	4	456	240	145	160	36	518	240	145	160	41	
CNHM3 - 612□ - (B) - Ratio	2.2	4	476	246	152	173	40	539	246	152	173	47	
CNHM4 - 612□ - (B) - Ratio	3.0	4	499	266	168	212	50	571	266	168	212	60	
CNHM5 - 612□ - (B) - Ratio	3.7	4	499	266	168	212	50	571	266	168	212	60	
CNHM8 - 612□ - (B) - Ratio	5.5	4	543	266	168	212	57	615	266	168	212	67	

Note: 4. □ indicates 0 or 5, expressing combination with reduction ratio. Refer to the Selection Table for details.

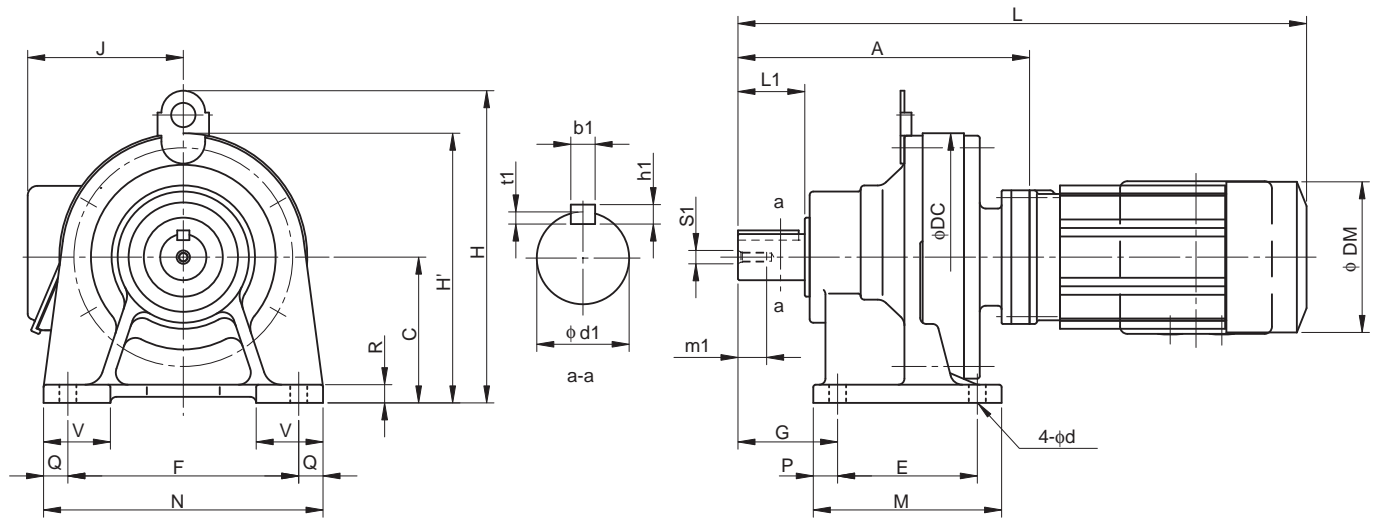
5. "B" after the frame size indicates models equipped with brake.

6. Dimension of shaft end: Refer to pages F-28 to F-29 for details.

7. Dimensions in above drawings are subject to change without notice.

Dimension Tables Gearmotors (Universal Direction, Foot-Mount)

CNHM - 606 DA to 612 DB

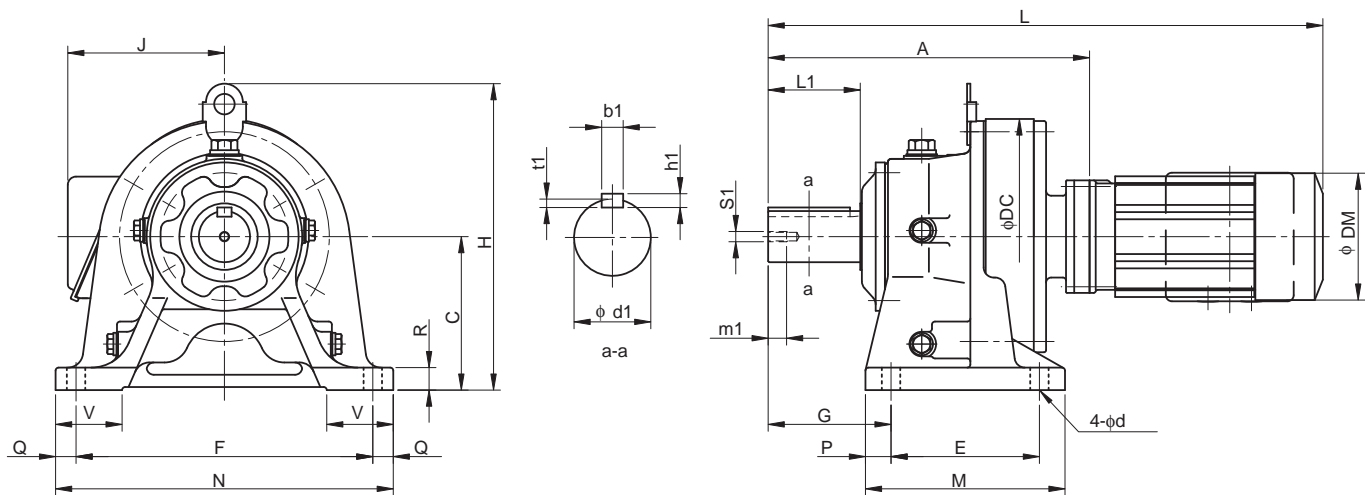


Frame size <small>Note 4</small>	A	C	DC	E	F	G	M	N	P	Q	R	V	d	Output Shaft <small>Note 2, 3, 6</small>						
														d1	L1	b1	h1	t1	S1	m1
606 DA	125	80	110	60	120	41	84	144	12	12	10	35	9	14	25	5	5	3	M5	16
607 DA	131	80	110	60	120	47	84	144	12	12	10	35	9	18	30	6	6	3.5	M6	16
609 DA	190	100	150	90	150	60	135	180	15	15	12	40	11	28	35	8	7	4	M8	20
610 DA	204	100	150	90	150	60	135	180	15	15	12	40	11	28	35	8	7	4	M8	20
612 DA	240	120	204	115	190	82	155	230	20	20	15	55	14	38	55	10	8	5	M8	20
612 DB	252	120	204	115	190	82	155	230	20	20	15	55	14	38	55	10	8	5	M8	20

Model <small>Note 4, 5</small>	Motor		Standard						With Brake					
	kW	P	L	H	H'	J	DM	W(kg)	L	H	H'	J	DM	W(kg)
CNHM01 - 606 DA - (B) - Ratio	0.1	4	287	-	140	130	119	9	294	-	138	130	124	10
CNHM01 - 607 DA - (B) - Ratio	0.1	4	293	-	140	130	119	9	300	-	138	130	124	10
CNHM02 - 607 DA - (B) - Ratio	0.2	4	311	-	140	130	124	10	339	-	138	130	124	11
CNHM01 - 609 DA - (B) - Ratio	0.1	4	352	207	-	130	119	17	359	207	-	130	124	18
CNHM02 - 609 DA - (B) - Ratio	0.2	4	370	207	-	130	124	18	398	207	-	130	124	19
CNHM03 - 609 DA - (B) - Ratio	0.25	4	370	207	-	130	124	18	398	207	-	130	124	19
CNHM05 - 609 DA - (B) - Ratio	0.4	4	386	207	-	130	124	19	418	207	-	130	124	20
CNHM01 - 610 DA - (B) - Ratio	0.1	4	366	207	-	130	119	19	373	207	-	130	124	20
CNHM02 - 610 DA - (B) - Ratio	0.2	4	384	207	-	130	124	20	412	207	-	130	124	21
CNHM03 - 610 DA - (B) - Ratio	0.25	4	384	207	-	130	124	20	412	207	-	130	124	21
CNHM05 - 610 DA - (B) - Ratio	0.4	4	400	207	-	130	124	21	432	207	-	130	124	22
CNHM01 - 612 DA - (B) - Ratio	0.1	4	402	257	-	130	119	30	409	257	-	130	124	31
CNHM02 - 612 DA - (B) - Ratio	0.2	4	420	257	-	130	124	31	448	257	-	130	124	32
CNHM03 - 612 DA - (B) - Ratio	0.25	4	420	257	-	130	124	31	448	257	-	130	124	32
CNHM05 - 612 DA - (B) - Ratio	0.4	4	436	257	-	130	124	32	468	257	-	130	124	33
CNHM01 - 612 DB - (B) - Ratio	0.1	4	414	257	-	130	119	33	421	257	-	130	124	35
CNHM02 - 612 DB - (B) - Ratio	0.2	4	432	257	-	130	124	34	473	257	-	130	124	36
CNHM03 - 612 DB - (B) - Ratio	0.25	4	432	257	-	130	124	34	473	257	-	130	124	36
CNHM05 - 612 DB - (B) - Ratio	0.4	4	448	257	-	130	124	35	473	257	-	130	124	37
CNHM08 - 612 DB - (B) - Ratio	0.55	4	489	257	-	140	148	39	532	257	-	140	148	42
CNHM1 - 612 DB - (B) - Ratio	0.75	4	489	257	-	140	148	39	532	257	-	140	148	42
CNHM1H - 612 DB - (B) - Ratio	1.1	4	516	257	-	145	160	42	578	257	-	145	160	47
CNHM2 - 612 DB - (B) - Ratio	1.5	4	516	257	-	145	160	42	578	257	-	145	160	47

Note: 1. indicates motor capacity.
 2. Dimension of shaft end diameter: Dimension tolerance conforms to JIS B 0401-1976 "h6."
 3. Dimension of shaft end key: Dimension tolerance conforms to JIS B 1301-1996 "Parallel Key."

Dimension Tables Gearmotors (Horizontal Direction, Foot-Mount)

CHHM^{Note 1} - 613□DA to 614□DC

GEARMOTORS

Dimension Tables
CHHM

Frame size <small>Note 4</small>	A	C	DC	E	F	G	M	N	P	Q	R	V	d	Output Shaft <small>Note 2, 3, 6</small>						
														d1	L1	b1	h1	t1	S1	m1
613□DA	294	150	230	145	290	100	195	330	25	20	22	65	18	50	70	14	9	5.5	M10	18
613□DB	303	150	230	145	290	100	195	330	25	20	22	65	18	50	70	14	9	5.5	M10	18
613□DC	317	150	230	145	290	100	195	330	25	20	22	65	18	50	70	14	9	5.5	M10	18
614□DA	314	150	230	145	290	120	195	330	25	20	22	65	18	50	90	14	9	5.5	M10	18
614□DB	323	150	230	145	290	120	195	330	25	20	22	65	18	50	90	14	9	5.5	M10	18
614□DC	337	150	230	145	290	120	195	330	25	20	22	65	18	50	90	14	9	5.5	M10	18

Model <small>Note 4, 5</small>	Motor		Standard					With Brake				
	kW	P	L	H	J	DM	W(kg)	L	H	J	DM	W(kg)
CHHM02 - 613□DA - (B) - Ratio	0.2	4	474	300	130	124	47	502	300	130	124	47
CHHM03 - 613□DA - (B) - Ratio	0.25	4	474	300	130	124	48	522	300	130	124	49
CHHM05 - 613□DA - (B) - Ratio	0.4	4	490	300	130	124	48	522	300	130	124	49
CHHM02 - 613□DB - (B) - Ratio	0.2	4	483	300	130	124	49	511	300	130	124	51
CHHM03 - 613□DB - (B) - Ratio	0.25	4	483	300	130	124	49	511	300	130	124	51
CHHM05 - 613□DB - (B) - Ratio	0.4	4	499	300	130	124	50	531	300	130	124	52
CHHM08 - 613□DB - (B) - Ratio	0.55	4	540	263	140	148	54	583	263	140	148	57
CHHM1 - 613□DB - (B) - Ratio	0.75	4	540	263	140	148	54	583	263	140	148	57
CHHM1H - 613□DB - (B) - Ratio	1.1	4	573	270	145	160	57	635	270	145	160	62
CHHM2 - 613□DB - (B) - Ratio	1.5	4	573	270	145	160	57	635	270	145	160	62
CHHM08 - 613□DC - (B) - Ratio	0.55	4	554	265	140	148	56	597	265	140	148	59
CHHM1 - 613□DC - (B) - Ratio	0.75	4	554	265	140	148	56	597	265	140	148	59
CHHM2 - 613□DC - (B) - Ratio	1.5	4	587	272	145	160	59	649	272	145	160	64
CHHM3 - 613□DC - (B) - Ratio	2.2	4	607	276	152	173	64	670	276	152	173	70
CHHM02 - 614□DA - (B) - Ratio	0.2	4	494	300	130	124	47	522	300	130	124	48
CHHM03 - 614□DA - (B) - Ratio	0.25	4	494	300	130	124	47	522	300	130	124	48
CHHM05 - 614□DA - (B) - Ratio	0.4	4	510	300	130	124	48	542	300	130	124	49
CHHM02 - 614□DB - (B) - Ratio	0.2	4	503	300	130	124	49	531	300	130	124	51
CHHM03 - 614□DB - (B) - Ratio	0.25	4	503	300	130	124	49	531	300	130	124	51
CHHM05 - 614□DB - (B) - Ratio	0.4	4	519	300	130	124	50	551	300	130	124	52
CHHM08 - 614□DB - (B) - Ratio	0.55	4	560	263	140	148	54	603	263	140	148	57
CHHM1 - 614□DB - (B) - Ratio	0.75	4	560	263	140	148	54	603	263	140	148	57
CHHM1H - 614□DB - (B) - Ratio	1.1	4	593	270	145	160	57	655	270	145	160	62
CHHM2 - 614□DB - (B) - Ratio	1.5	4	593	270	145	160	57	655	270	145	160	62
CHHM08 - 614□DC - (B) - Ratio	0.55	4	574	265	140	148	56	617	265	140	148	59
CHHM1 - 614□DC - (B) - Ratio	0.75	4	574	265	140	148	56	617	265	140	148	59
CHHM1H - 614□DC - (B) - Ratio	1.1	4	607	270	145	160	60	669	270	145	160	65
CHHM2 - 614□DC - (B) - Ratio	1.5	4	607	270	145	160	60	669	270	145	160	65
CHHM3 - 614□DC - (B) - Ratio	2.2	4	627	276	152	173	64	690	276	152	173	70

Note: 4. □ indicates 0 or 5, expressing combination with reduction ratio. Refer to the Selection Table for details.

5. "B" after the frame size indicates models equipped with brake.

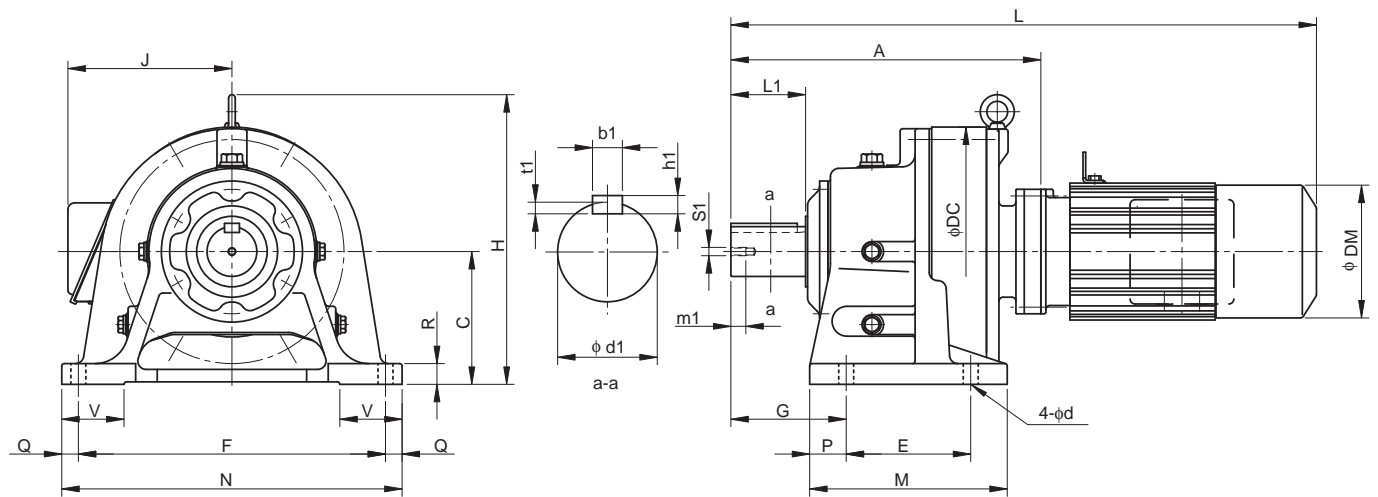
6. Dimension of shaft end: Refer to pages F-28 to F-29 for details.

7. Dimensions in above drawings are subject to change without notice.

Dimension Tables Gearmotors (Horizontal Direction, Foot-Mount)

CHHM^{Note 1} - 616□DA to 618□DA

Dimension Tables
CHHM

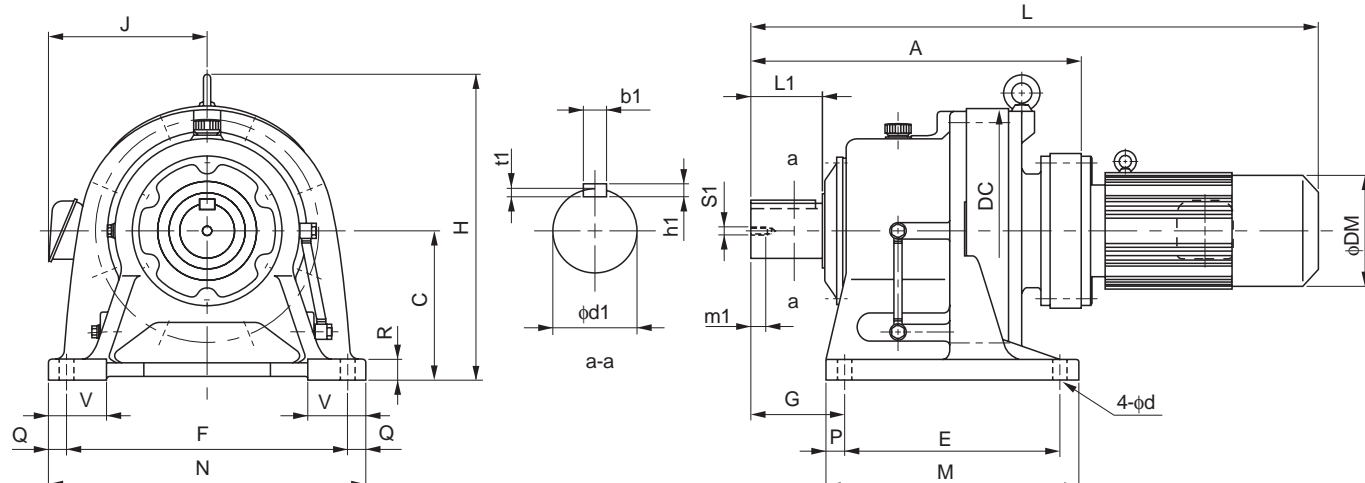


Frame size <small>Note 4</small>	A	C	DC	E	F	G	M	N	P	Q	R	V	d	Output Shaft <small>Note 2, 3, 6</small>						
														d1	L1	b1	h1	t1	S1	m1
616□DA	373	160	300	150	370	139	238	410	44	20	25	75	18	60	90	18	11	7	M10	18
616□DB	387	160	300	150	370	139	238	410	44	20	25	75	18	60	90	18	11	7	M10	18
617□DA	418	200	340	275	380	125	335	430	30	25	30	80	22	70	90	20	12	7.5	M12	24
617□DB	432	200	340	275	380	125	335	430	30	25	30	80	22	70	90	20	12	7.5	M12	24
618□DA	474	220	370	320	420	145	380	470	30	25	30	85	22	80	110	22	14	9	M12	24

Model <small>Note 4, 5</small>	Motor		Standard					With Brake				
	kW	P	L	H	J	DM	W(kg)	L	H	J	DM	W(kg)
CHHM02 - 616□DA - (B) - Ratio	0.2	4	553	349	130	124	90	581	349	130	124	92
CHHM03 - 616□DA - (B) - Ratio	0.25	4	553	349	130	124	90	581	349	130	124	92
CHHM05 - 616□DA - (B) - Ratio	0.4	4	569	349	130	124	91	601	349	130	124	93
CHHM08 - 616□DA - (B) - Ratio	0.55	4	610	349	140	148	95	653	349	140	148	98
CHHM1 - 616□DA - (B) - Ratio	0.75	4	610	349	140	148	95	653	349	140	148	98
CHHM1H - 616□DA - (B) - Ratio	1.1	4	643	349	145	160	99	705	349	145	160	104
CHHM2 - 616□DA - (B) - Ratio	1.5	4	643	349	145	160	99	705	349	145	160	104
CHHM08 - 616□DB - (B) - Ratio	0.55	4	624	349	140	148	97	667	349	140	148	100
CHHM1 - 616□DB - (B) - Ratio	0.75	4	624	349	140	148	97	667	349	140	148	100
CHHM1H - 616□DB - (B) - Ratio	1.1	4	657	349	145	160	101	719	349	145	160	106
CHHM2 - 616□DB - (B) - Ratio	1.5	4	657	349	145	160	101	719	349	145	160	106
CHHM3 - 616□DB - (B) - Ratio	2.2	4	677	349	152	173	105	740	349	152	173	111
CHHM02 - 617□DA - (B) - Ratio	0.2	4	598	416	130	124	120	626	416	130	124	127
CHHM03 - 617□DA - (B) - Ratio	0.25	4	598	416	130	124	120	626	416	130	124	127
CHHM05 - 617□DA - (B) - Ratio	0.4	4	614	416	130	124	126	646	416	130	124	128
CHHM08 - 617□DA - (B) - Ratio	0.55	4	655	416	140	148	130	698	416	140	148	133
CHHM1 - 617□DA - (B) - Ratio	0.75	4	655	416	140	148	130	698	416	140	148	133
CHHM1H - 617□DA - (B) - Ratio	1.1	4	688	416	145	160	133	750	416	145	160	138
CHHM2 - 617□DA - (B) - Ratio	1.5	4	688	416	145	160	133	750	416	145	160	138
CHHM08 - 617□DB - (B) - Ratio	0.55	4	669	416	140	148	127	712	416	140	148	134
CHHM1 - 617□DB - (B) - Ratio	0.75	4	669	416	140	148	127	712	416	140	148	134
CHHM1H - 617□DB - (B) - Ratio	1.1	4	702	416	145	160	136	764	416	145	160	141
CHHM2 - 617□DB - (B) - Ratio	1.5	4	702	416	145	160	136	764	416	145	160	141
CHHM3 - 617□DB - (B) - Ratio	2.2	4	722	416	152	173	140	785	416	152	173	146
CHHM05 - 618□DA - (B) - Ratio	0.4	4	670	451	130	124	171	702	451	130	124	173
CHHM08 - 618□DA - (B) - Ratio	0.55	4	711	451	140	148	175	754	451	140	148	178
CHHM1 - 618□DA - (B) - Ratio	0.75	4	711	451	140	148	175	754	451	140	148	178
CHHM1H - 618□DA - (B) - Ratio	1.1	4	744	451	145	160	179	806	451	145	160	184
CHHM2 - 618□DA - (B) - Ratio	1.5	4	744	451	145	160	179	806	451	145	160	184
CHHM3 - 618□DA - (B) - Ratio	2.2	4	764	451	152	173	183	827	451	152	173	189

Note: 1. □ indicates motor capacity.
 2. Dimension of shaft end diameter: Dimension tolerance conforms to JIS B 0401-1976 "h6."
 3. Dimension of shaft end key: Dimension tolerance conforms to JIS B 1301-1996 "Parallel Key."

Dimension Tables Gearmotors (Horizontal Direction, Foot-Mount)

CHHM^{Note 1} - 616□DC to 619□DA

GEARMOTORS

Dimension Tables
CHHM

Frame size <small>Note 4</small>	A	C	DC	E	F	G	M	N	P	Q	R	V	d	Output Shaft <small>Note 2, 3, 6</small>						
														d1	L1	b1	h1	t1	S1	m1
616□DC	389	160	300	150	370	139	238	410	44	20	25	75	18	60	90	18	11	7	M10	18
617□DC	436	200	340	275	380	125	335	430	30	25	30	80	22	70	90	20	12	7.5	M12	24
618□DB	496	220	370	320	420	145	380	470	30	25	30	85	22	80	110	22	14	9	M12	24
619□DA	556	250	430	380	480	170	440	530	30	25	35	90	26	95	135	25	14	9	M20	34

Model <small>Note 4, 5</small>	Motor		Standard					With Brake				
	kW	P	L	H	J	DM	W(kg)	L	H	J	DM	W(kg)
CHHM1H - 616□DC - (B) - Ratio	1.1	4	659	349	145	160	107	721	349	145	160	112
CHHM2 - 616□DC - (B) - Ratio	1.5	4	659	349	145	160	107	721	349	145	160	112
CHHM3 - 616□DC - (B) - Ratio	2.2	4	679	349	152	173	111	742	349	152	173	118
CHHM4 - 616□DC - (B) - Ratio	3.0	4	702	349	168	212	121	774	349	168	212	131
CHHM5 - 616□DC - (B) - Ratio	3.7	4	702	349	168	212	121	774	349	168	212	131
CHHM8 - 616□DC - (B) - Ratio	5.5	4	746	349	168	212	128	818	349	168	212	138
CHHM1H - 617□DC - (B) - Ratio	1.1	4	706	416	145	160	141	768	416	145	160	146
CHHM2 - 617□DC - (B) - Ratio	1.5	4	706	416	145	160	141	768	416	145	160	146
CHHM3 - 617□DC - (B) - Ratio	2.2	4	726	416	152	173	145	789	416	152	173	152
CHHM4 - 617□DC - (B) - Ratio	3.0	4	749	416	168	212	155	821	416	168	212	165
CHHM5 - 617□DC - (B) - Ratio	3.7	4	749	416	168	212	155	821	416	168	212	165
CHHM8 - 617□DC - (B) - Ratio	5.5	4	793	416	168	212	162	865	416	168	212	172
CHHM1H - 618□DB - (B) - Ratio	1.1	4	766	451	145	160	194	828	451	145	160	199
CHHM2 - 618□DB - (B) - Ratio	1.5	4	766	451	145	160	194	828	451	145	160	199
CHHM3 - 618□DB - (B) - Ratio	2.2	4	786	451	152	173	197	849	451	152	173	204
CHHM4 - 618□DB - (B) - Ratio	3.0	4	809	451	168	212	207	881	451	168	212	217
CHHM5 - 618□DB - (B) - Ratio	3.7	4	809	451	168	212	207	881	451	168	212	217
CHHM8 - 618□DB - (B) - Ratio	5.5	4	853	451	168	212	214	925	451	168	212	224
CHHM10 - 618□DB - (B) - Ratio	7.5	4	876	451	213	251	229	971	451	213	251	247
CHHM15 - 618□DB - (B) - Ratio	11	4	936	451	213	251	243	1031	451	213	251	261
CHHM1 - 619□DA - (B) - Ratio	0.75	4	793	531	140	148	250	836	531	140	148	253
CHHM1H - 619□DA - (B) - Ratio	1.1	4	826	531	145	160	254	888	531	145	160	259
CHHM2 - 619□DA - (B) - Ratio	1.5	4	826	531	145	160	254	888	531	145	160	259
CHHM3 - 619□DA - (B) - Ratio	2.2	4	846	531	152	173	258	909	531	152	173	265
CHHM4 - 619□DA - (B) - Ratio	3.0	4	869	531	168	212	268	941	531	168	212	278
CHHM5 - 619□DA - (B) - Ratio	3.7	4	869	531	168	212	268	941	531	168	212	278
CHHM8 - 619□DA - (B) - Ratio	5.5	4	913	531	168	212	275	985	531	168	212	285

Note: 4. □ indicates 0 or 5, expressing combination with reduction ratio. Refer to the Selection Table for details.

5. "B" after the frame size indicates models equipped with brake.

6. Dimension of shaft end: Refer to pages F-28 to F-29 for details.

7. Dimensions in above drawings are subject to change without notice.